



Den Europæiske Landbrugsfond for Udvikling af Landdistrikter  
Danmark og Europa investerer i landdistrikterne

**LDP 2020**



Miljø- og Fødevareministeriet  
NaturErhvervstyrelsen

Den Europæiske Landbrug  
for Udvikling af Landdistrik

J-Kommissionen, Den Europæiske Landbrugsfond for Udvikling af Landdistrik

Cand. agro Dorthe Poulsgaard Frandsen,  
SEGES Construction & Environment



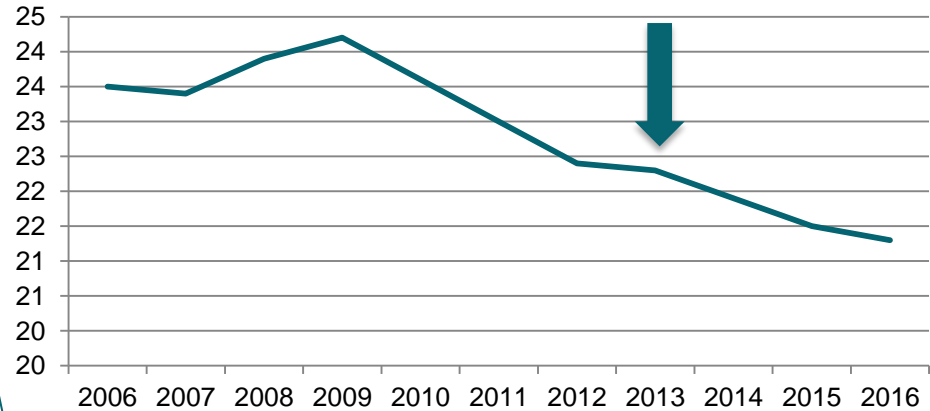
# AGENDA

- From mortality to survival 2015-2016 (PattegriseLIV)
  - Causes of death
  - Results

# PURPOSE: SURVIVAL OF MORE PIGLETS



## Total mortality, piglets until weaning in DK, %



Summit declaration 2014:  
Reduce piglet mortality with 1  
piglet per litter in 2020 – approx.  
16 % total mortality



# TOTAL PIGLET MORTALITY

Fravænnede grise pr. årssø, stk.	33,0	33,2	37,7	36,0	33,7	32,5
Fravænnede grise pr. kuld	14,4	14,5	16,5	15,3	14,5	14,4
Kuld pr årssø incl. gyfte, stk	2,29	2,28	2,28	2,35	2,32	2,25
Diegivningstid, dage	31	32	32	32	30	27
Total fødte pr. kuld, stk.	18,3	17,4	19,8	18,7	17,9	17,8
Levendefødte pr. kuld, stk	16,7	16,2	18,3	17,3	16,5	16,6
Dødfødte pr. kuld, stk	1,6	1,2	1,5	1,4	1,4	1,2
Døde indtil fravænnning, pct.	13,9	10,5	10,3	11,4	12,1	13,2

Total born per litter = Live born/litter + Still born/litter       $18.3+1.5 = 19.8$

Dead per litter = Total born per litter - weaned per litter       $19.8-16.5 = 3.3$

Total piglet mortality =  $\frac{\text{Dead piglets per litter} \times 100}{\text{Total born per litter}}$        $\frac{3.3 \times 100}{19.8} = 16.7 \%$



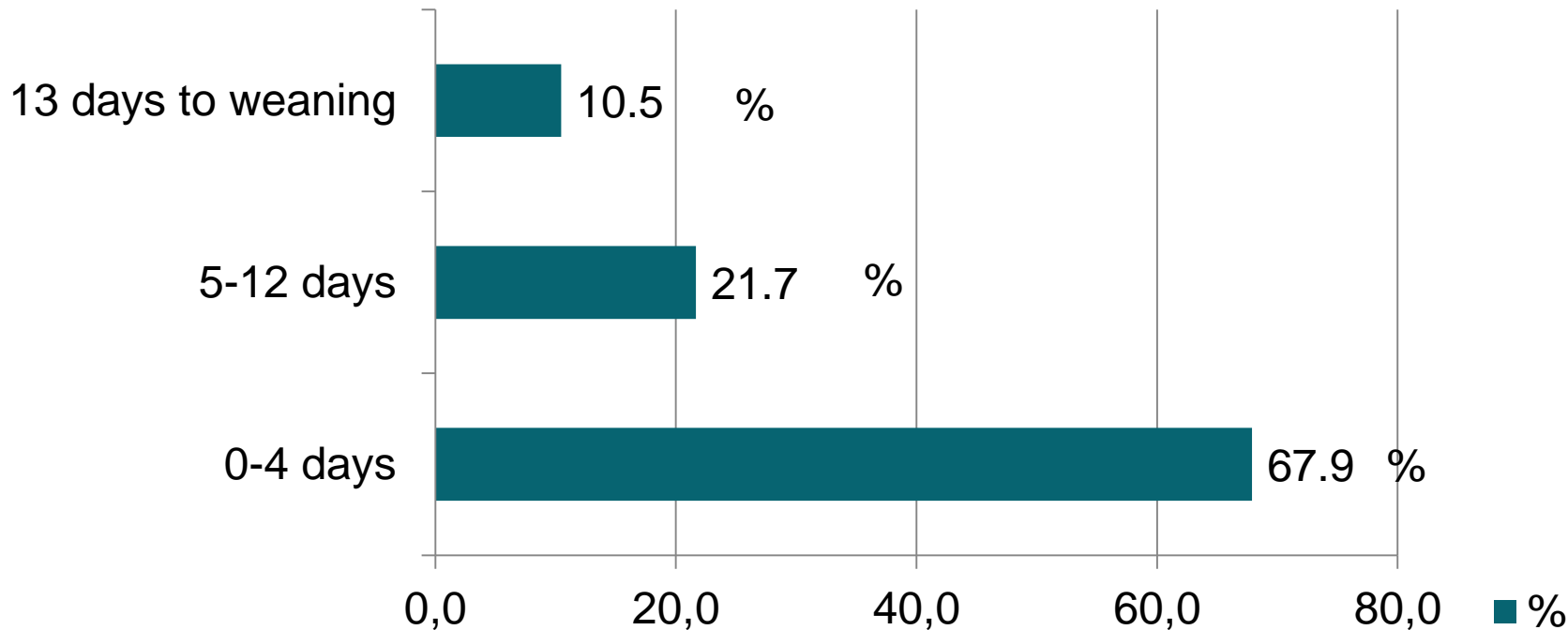
# CAUSE OF DEATH

- 1) Post mortem examination on 50 piglets per herd (1,364)
- 2) Post mortem course for staff



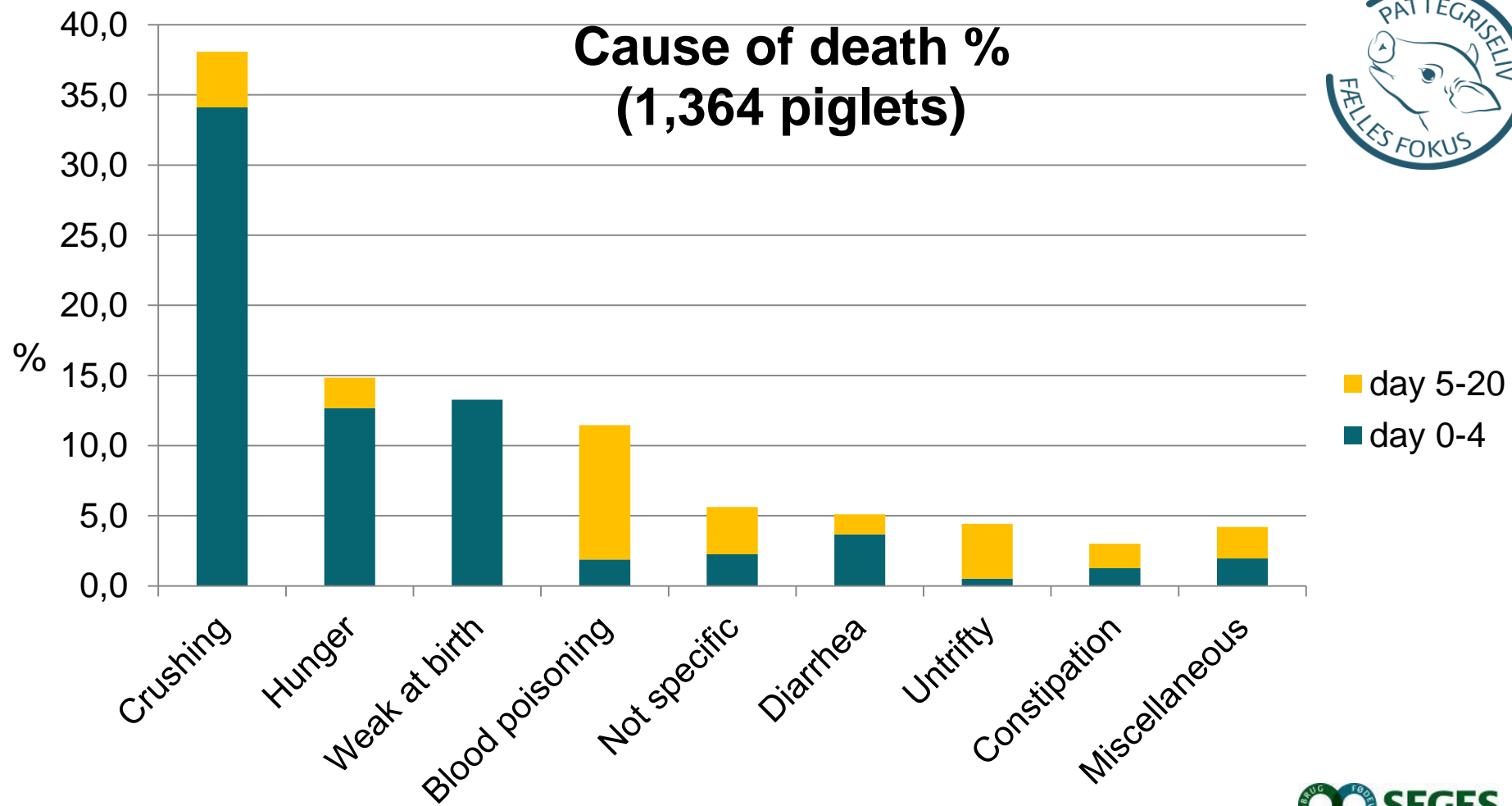


# AGE OF DEAD PIGLETS



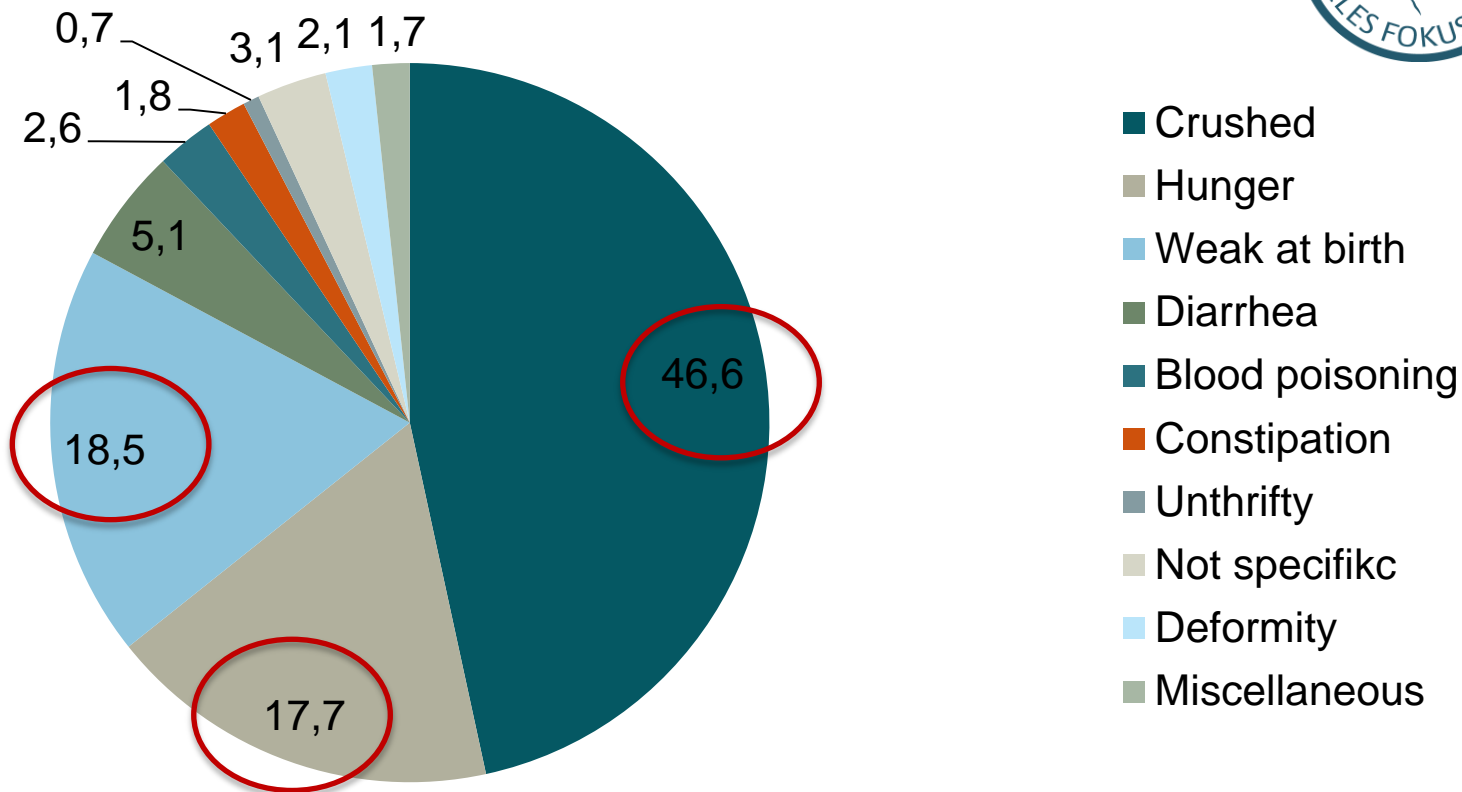


# Cause of death % (1,364 piglets)





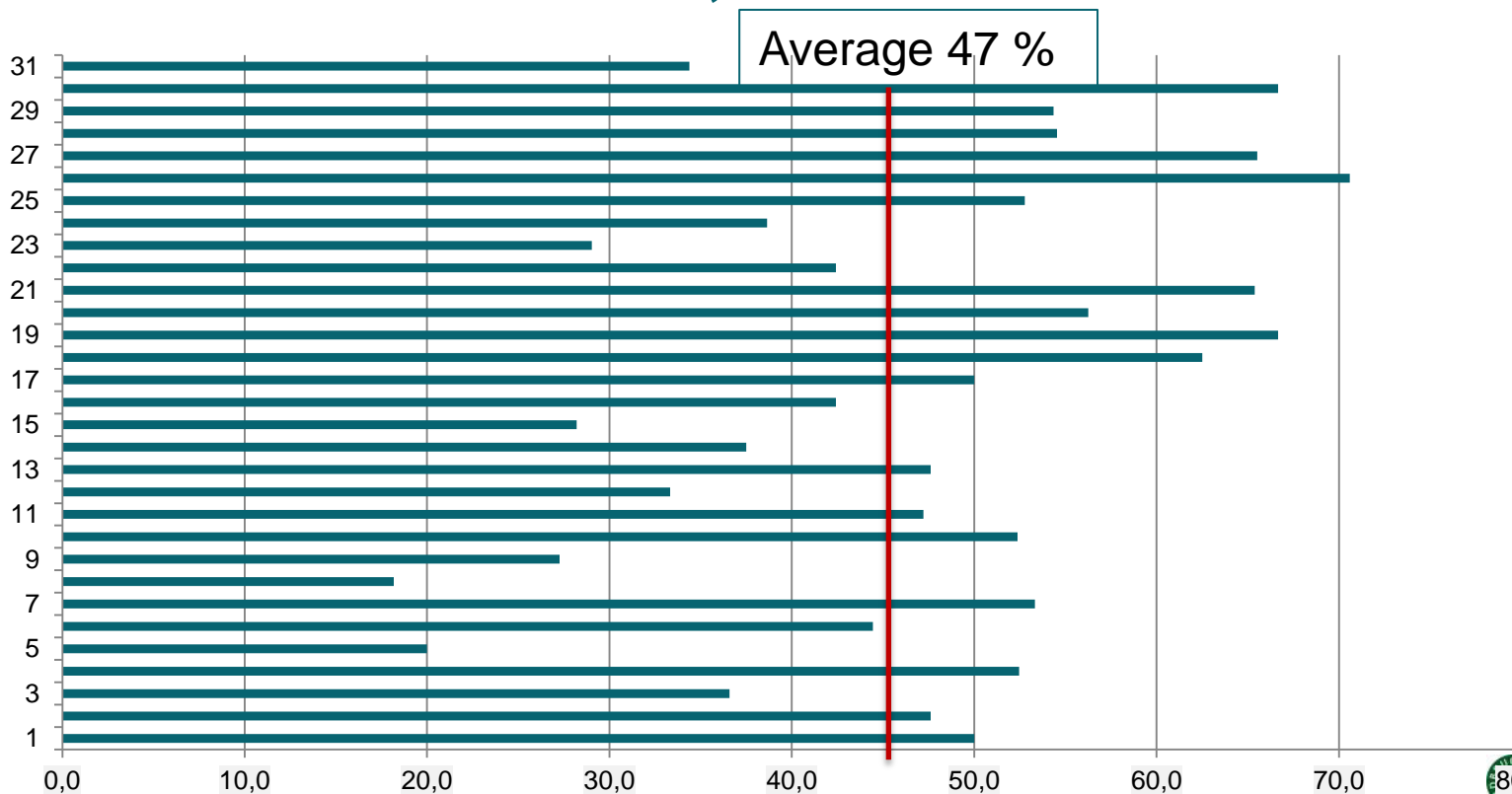
# Cause of death, day 1-4 (%)



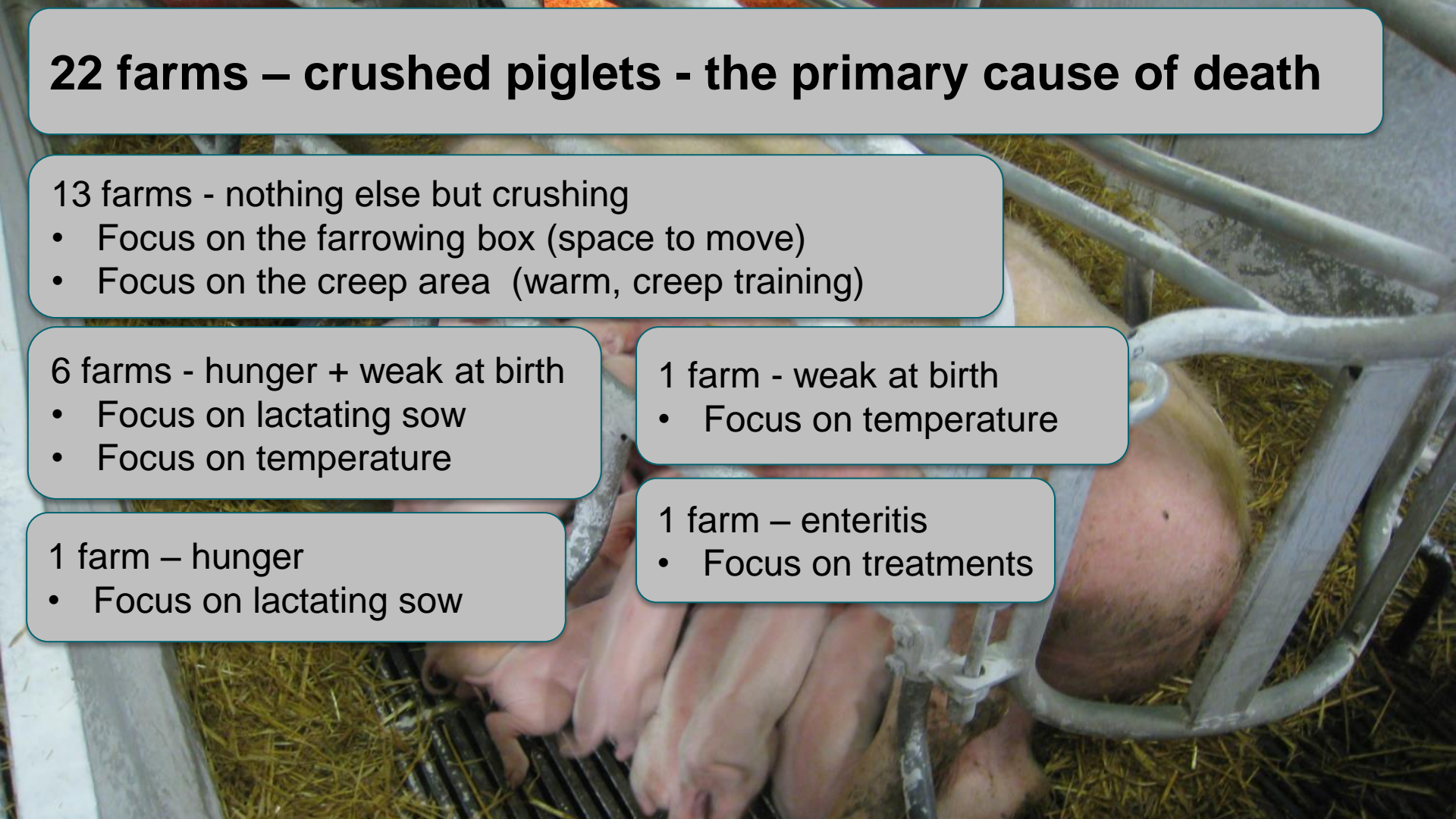




# PRIMARY CAUSE OF DEATH - CRUSHED PIGLETS, %



## 22 farms – crushed piglets - the primary cause of death



13 farms - nothing else but crushing

- Focus on the farrowing box (space to move)
- Focus on the creep area (warm, creep training)

6 farms - hunger + weak at birth

- Focus on lactating sow
- Focus on temperature

1 farm - weak at birth

- Focus on temperature

1 farm – hunger

- Focus on lactating sow

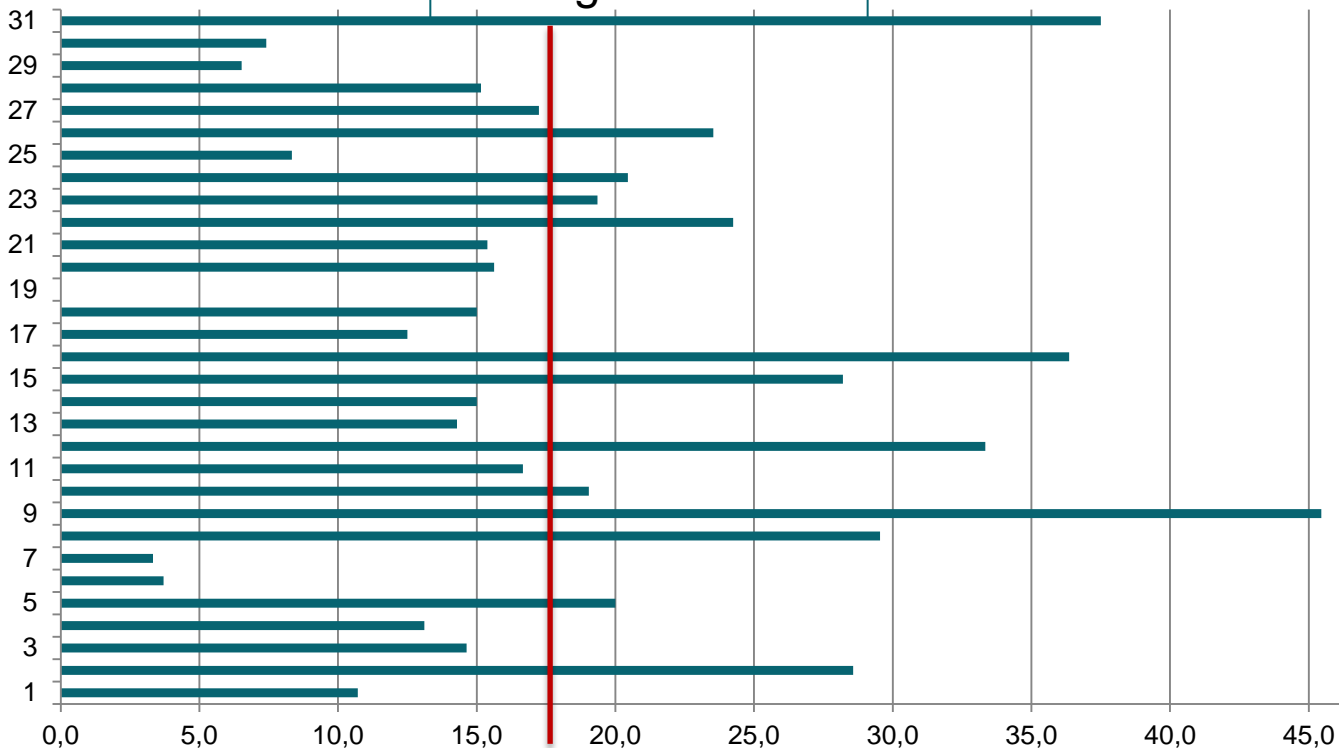
1 farm – enteritis

- Focus on treatments



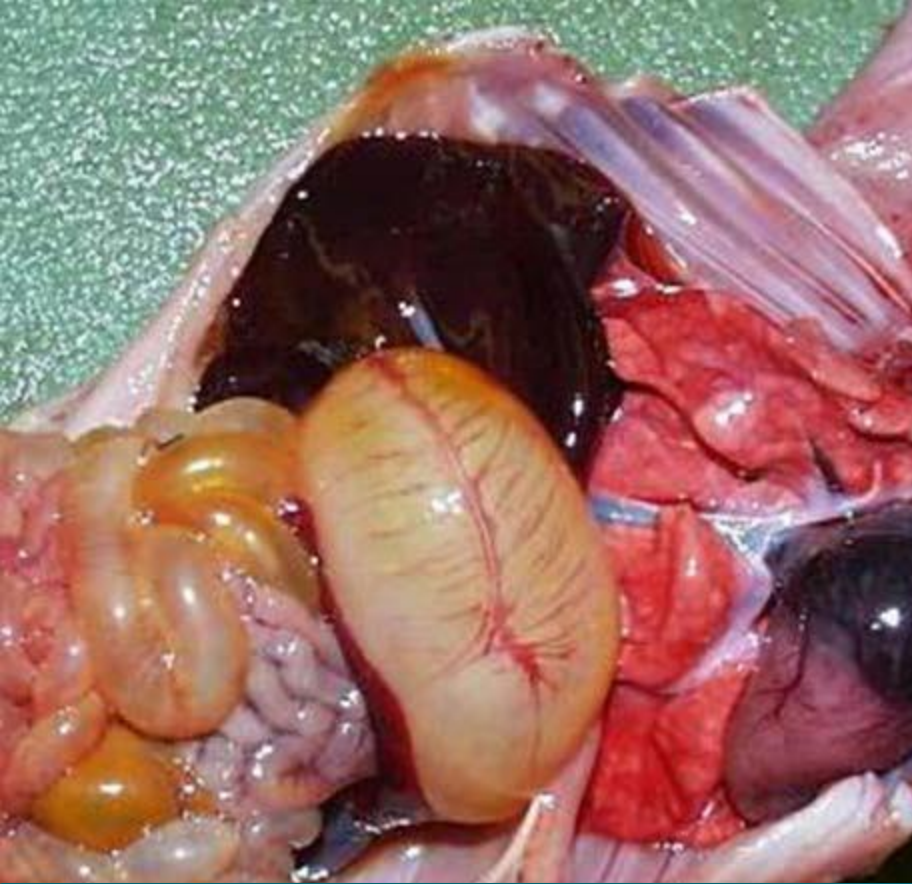
# % DEAD FROM HUNGER

Average 18%



**4 farms – hunger - the primary cause of death**





Empty ←

Stomach →



Full

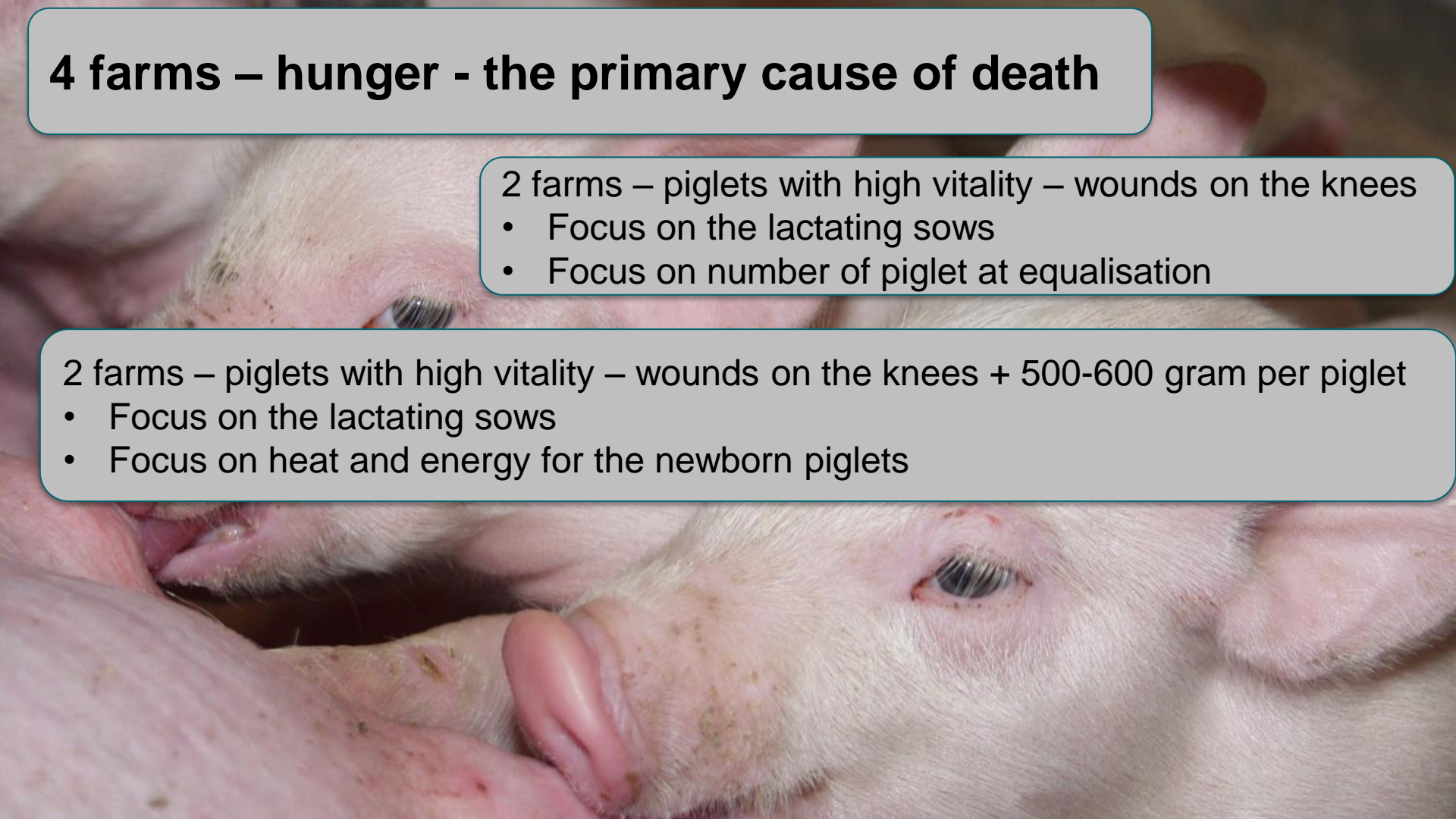
## 4 farms – hunger - the primary cause of death

2 farms – piglets with high vitality – wounds on the knees

- Focus on the lactating sows
- Focus on number of piglet at equalisation

2 farms – piglets with high vitality – wounds on the knees + 500-600 gram per piglet

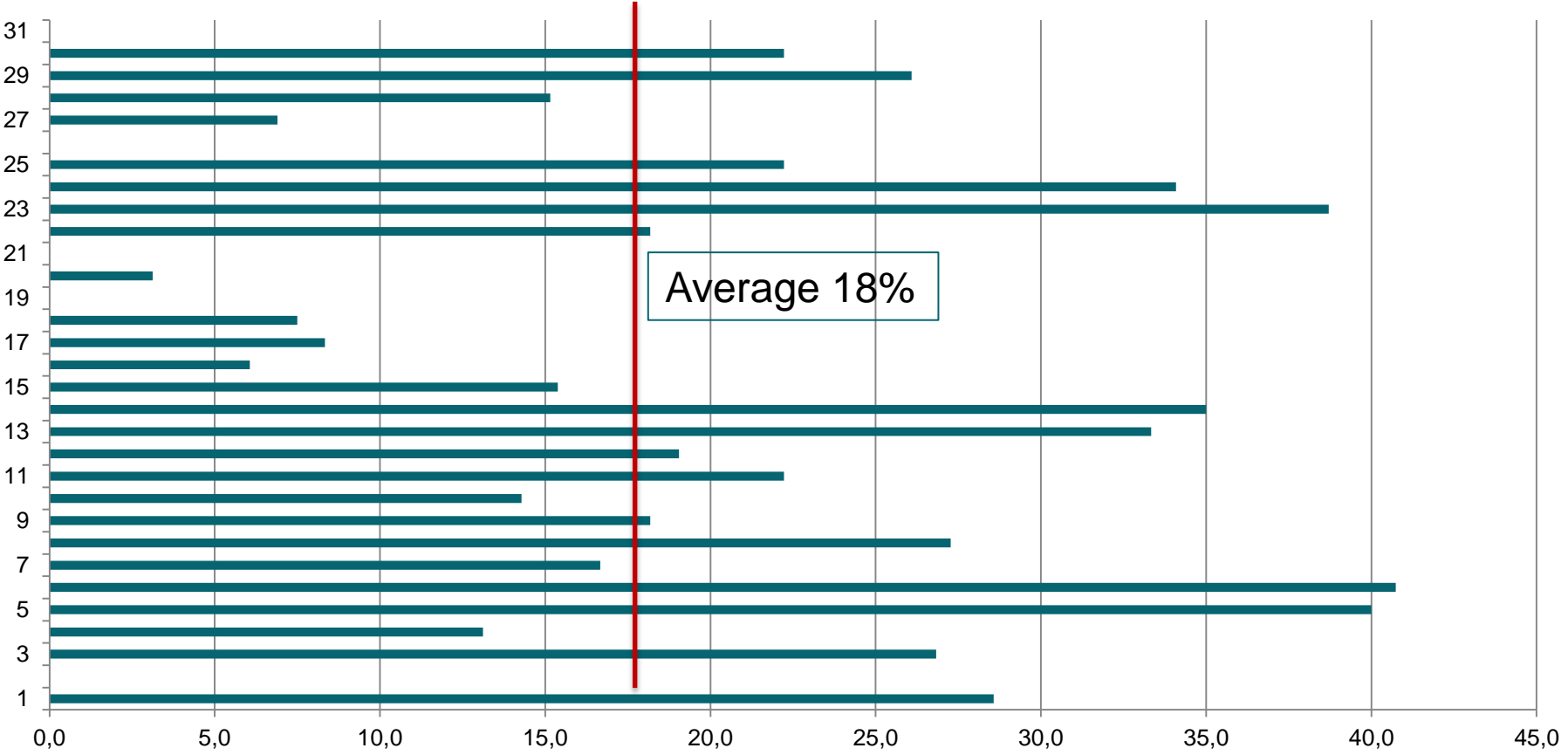
- Focus on the lactating sows
- Focus on heat and energy for the newborn piglets



# WEAK AT BIRTH

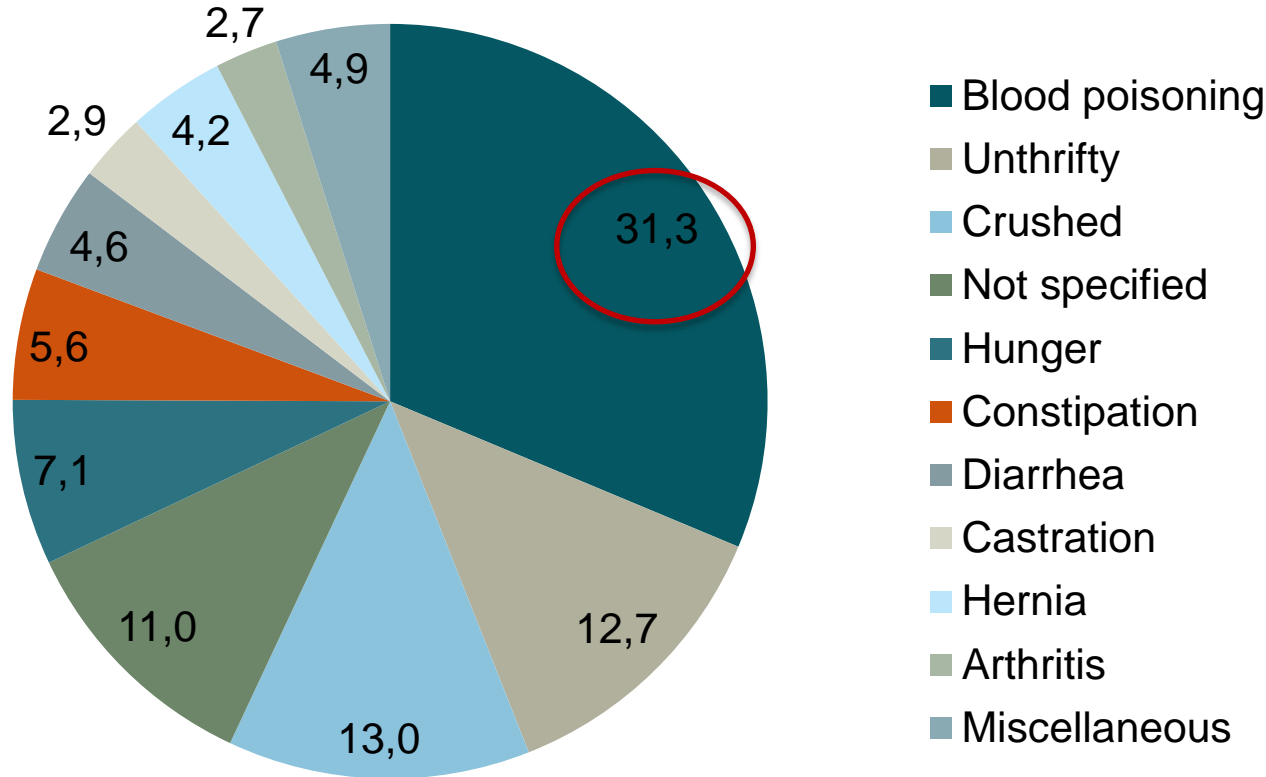


# Weak at birth, %



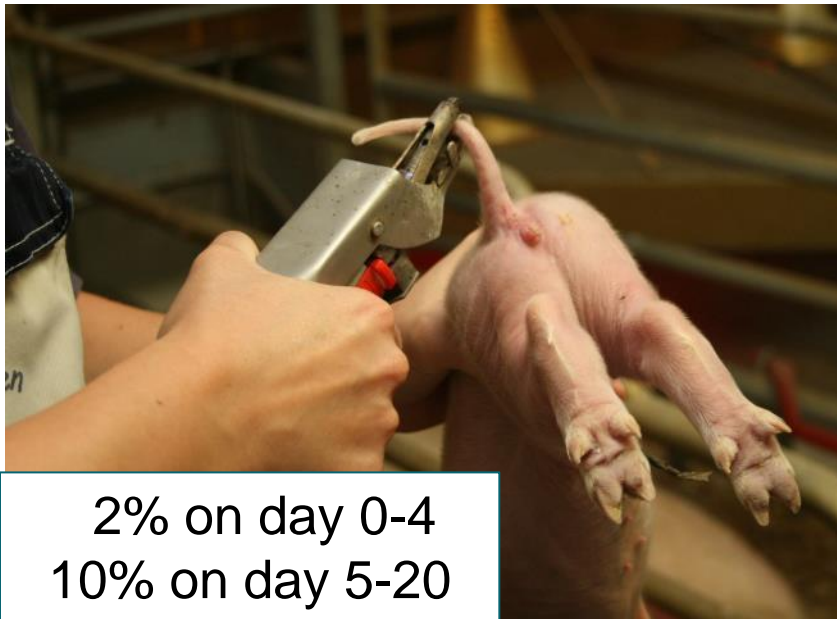


# Cause of death, day 5-20 (%)





# BLOOD POISONING – TAIL DOCKING



2% on day 0-4  
10% on day 5-20

- Unhealed wound
- Crooked cut
- Poor hygiene
- Too cold "cutter"



# BLOOD POISONING – TOOTH GRINDING



- Wrong instruction
- Lack of precision
- Time pressure



# BLOOD POISONING - CASTRATION

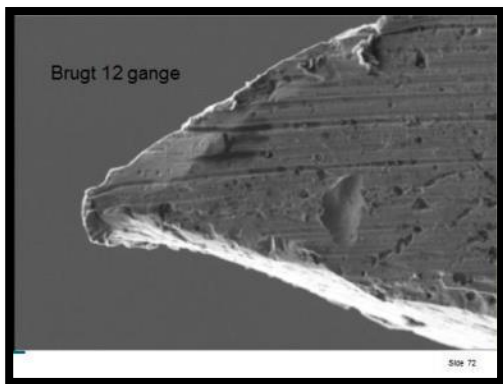


Poor instruction (maybe none)

Blunt scalpel

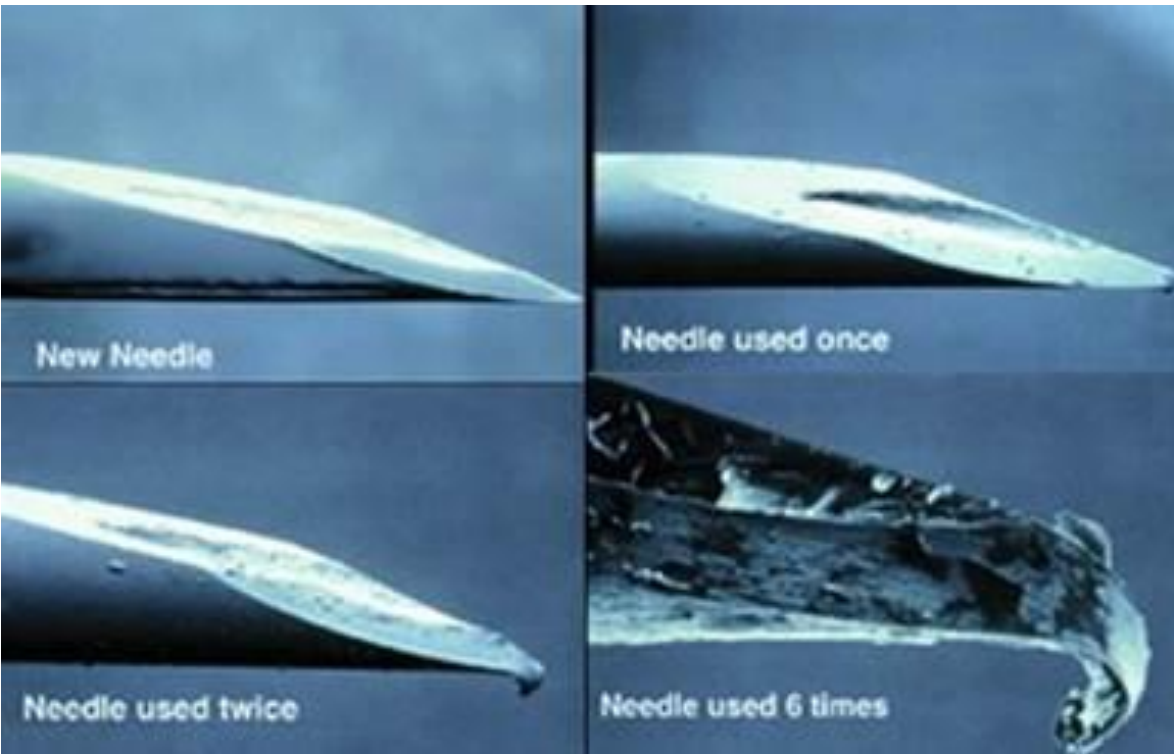
Poor hygiene

Too fast





# BLOOD POISONING - OTHERS



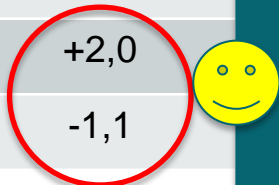


# RESULTS – PIGLET LIFE

	PigletLIFE 2014	PigletLIFE 2. half 2016	Difference
Lifeborn per litter	15,9	16,8	+0,9
Stillborn per litter	1,70	1,60	-0,1
Weaned per litter	13,7	14,4	+0,7
Litter per sow	2,27	2,29	+0,02
Weaned piglet per sow	31,0	33,0	+2,0
Totalmortality, %	22,0	20,9	-1,1

+Breeding (1.5 years):  
+0.8 weaned piglets per  
SOW

+ management:  
+1.2 weaned piglets per  
SOW

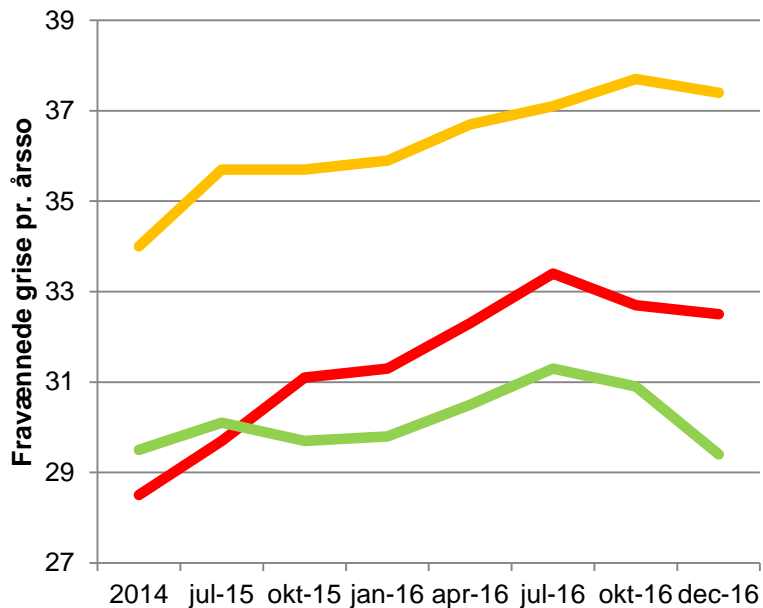


☺ SUCCES ☺

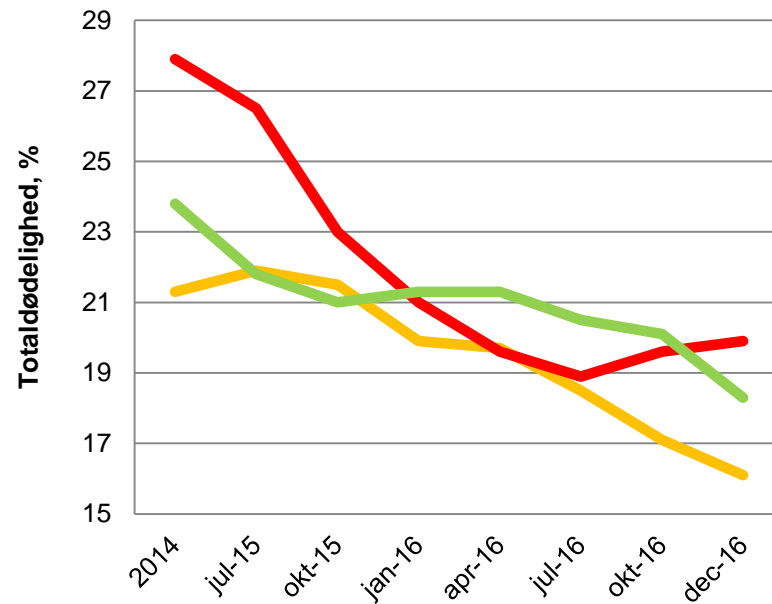


# THE COURSE OF THE 3 JERSEYS

## Weaned pigs per year sow



## Total mortality, %

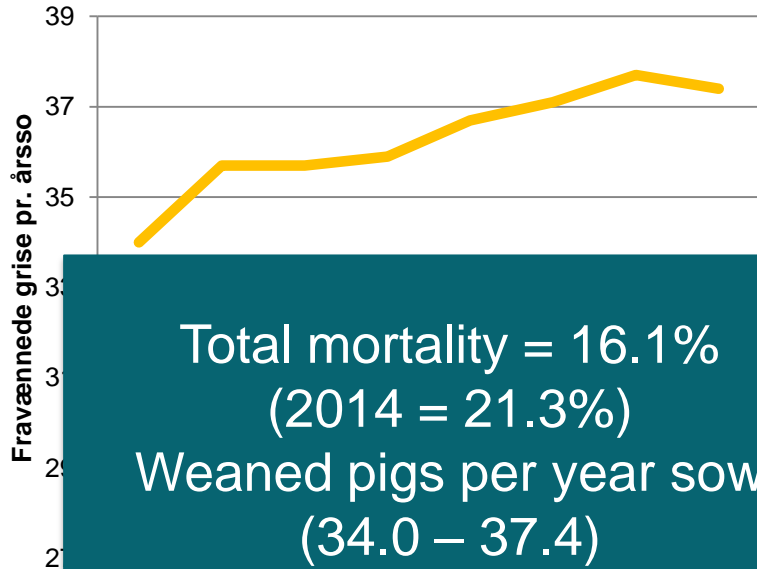




# THE COURSE OF THE YELLOW JERSEY

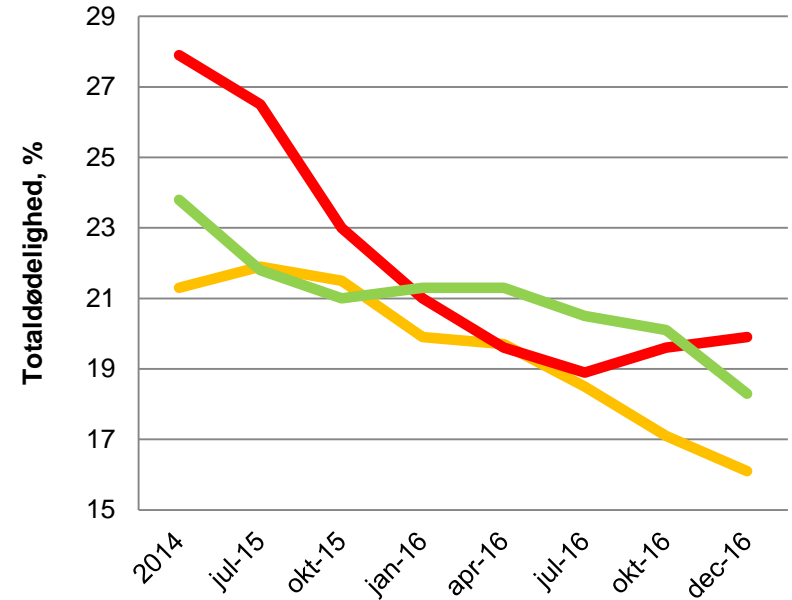


## Weaned pigs per year sow



Total mortality = 16.1%  
(2014 = 21.3%)  
Weaned pigs per year sow  
(34.0 – 37.4)

## Total mortality, %



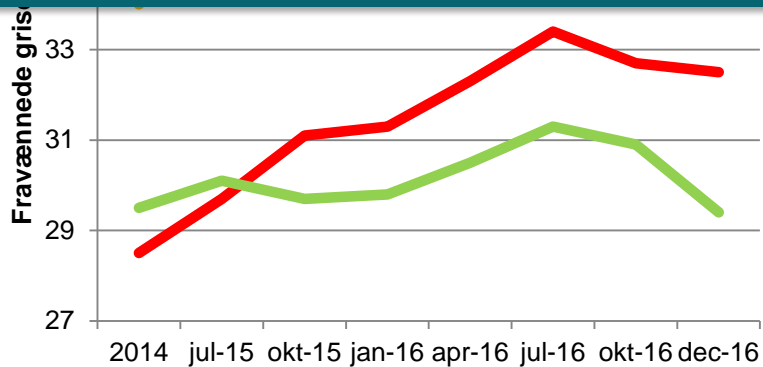
# THE COURSE OF THE GREEN JERSEY



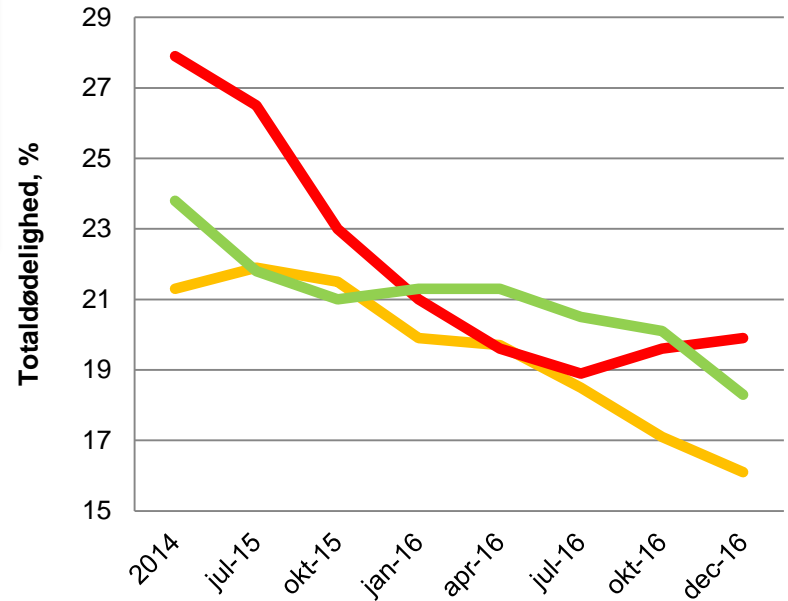
Total mortality = 18.3 %  
(2014 = 23.8%)

Weaned pigs per year sow  
(29.5 – 29.4)

(from 4 to 5 weeks of weaning)



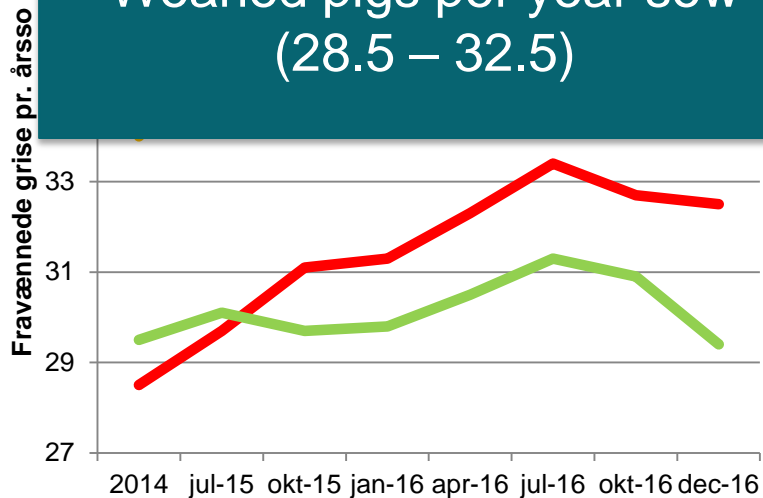
Total mortality, %



# THE COURSE OF THE POLKA DOT JERSEY



Total mortality = 19.9%  
 (2014 = 27.9%)  
 Weaned pigs per year sow  
 (28.5 – 32.5)



Total mortality, %

